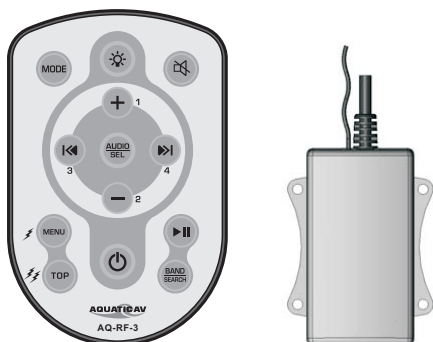




# AQUATICAV

## AQ-RF-3

Floatable Water-Resistant  
RF Wireless Remote With White LED LIGHT

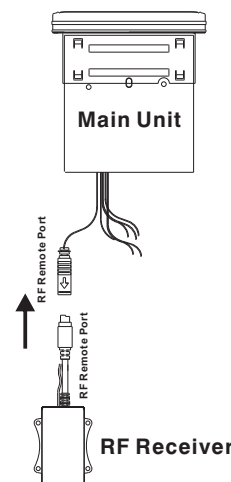


### 1. Contents

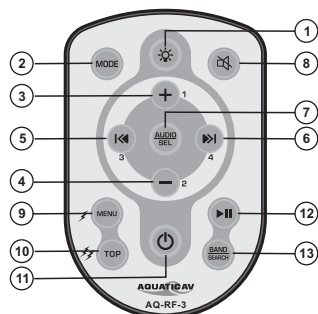
1. RF Receiver  x 1 pcs
2. Remote Control  x 1 pcs
3. 3V Lithium Battery x 1 pcs
4. User Manual x 1 pcs
5. Caution Card x 1 pcs
6. Remote Cradle x 1 pcs
7. Self tapping screws x 2 pcs
8. Double sided Mounting Tape x 1 pcs

### 2. How to install the RF Receiver

Connect the RF Receiver to the DVD/CD(AQ-DVD-3/3B, AQ-CD-3/3B). When installing the receiver do not put it in any metal shielding for better reception



### 3. Key Functions



1. Press and hold Light (☼) button to work as a white LED light.
2. Press MODE button to switch modes.
3. Use Volume + to raise the sound volume.
4. Use volume - to lower the sound volume.
5. Press(⏮) button to seek down/select the lower channel /track down, etc in different modes. Or hold this button to tune down/fast channel down/fast rewind, etc in different modes.
6. Press(⏭) button to seek up/select the higher channel/track up in different modes. Or hold this button to tune up/fast channel up/fast forward, etc in different modes.

7. Press "Audio/SEL" button to access the Audio menu to adjust the menu items. The main unit will automatically exit the audio menu after five seconds of inactivity. You can also press this button to confirm any settings or entering any channel.
8. Press MUTE(🔇) once to turn sound off or on.
9. Press MENU button to access menu. Or press and hold this button to access 12V (⚡) control.
10. Press the TOP button to access TOP. Or press and hold this button to access 12V (⚡) control.
11. Press POWER(🔌) once to turn on or off the unit.
12. Press PLAY/PAUSE(▶||) button to resume or pause the disc or iPod playback that is currently being played.
13. Press BAND/SEARCH to change bands in Tuner or SAT mode.  
Hold this button in SAT mode to SAT search.  
Press this button in iPod mode to iPod search.

### 4. Highlighted Features

- **DC +12V Power Out**  
This Remote has two buttons named 12V\_1 (⚡) and 12V\_2 (⚡). These will be used to control the main unit transmit switching signal to the receiver which will have 2 trigger wire outputs capable of driving 12VDC/350mA for operating relays. The 2 triggers will be activated On/Off via
  - Trigger 1(12V\_1)⚡: Press and hold "MENU"(9) button (>3 second);
  - Trigger 2(12V\_2)⚡: Press and hold "TOP"(10) button (>3 second).

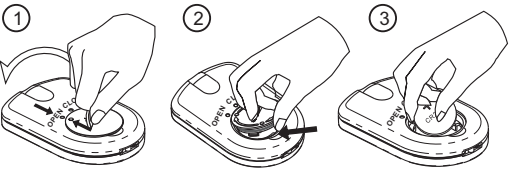
5. Installing Battery

- 1. On the back of the Remote, remove the battery cover with a coin.
- 2. Obtain one fully charged CR2430.
- 3. Replace the battery cover back into place, being careful to align it with the rubber seal.

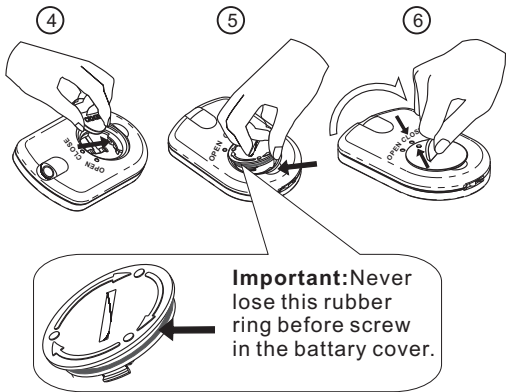
CR2430 Battery Specification (Coin Type Crimp-sealed, Primary Lithium Battery)

|                            |             |               |
|----------------------------|-------------|---------------|
| Nominal Capacity           |             | 280mAh        |
| Nominal Voltage            |             | 3V            |
| Standard Discharge Current |             | 0.3mA         |
| Max. Discharge Current     | Continuous  | 6mA           |
|                            | Pulse       | 50mA          |
| Temperature Range          |             | -10°C ~ +60°C |
| Weight                     |             | 4.0g          |
| Dimensions                 | Height (H)  | 3.0mm         |
|                            | Diameter(D) | 24.5mm        |

Remove The Battery Out.



Replace New Battery.



6. How to pair Remotes

Each receiver can support up to 10 Remote Controls at the same time.

**Method 1:** Press and hold MUTE (🔇) button for 5 seconds.

**Method 2:** Press the four buttons MODE, MUTE (🔇), BAND/SEARCH, TOP (2,8,13,10) at the corners of the remote panel one by one clockwise. This operation needs to be finished in 2 seconds.

Note: If the receiver already paired with 10 remotes successfully and you continue to pair the new remotes, it will automatically cover the first remotes paired.

7. Specifications

**Remote Control Power:** 1 pcs CR2430 Battery

**RF Range:** Up to 20 Feet

**Remote Control Dimensions (H x W x D):**  
86x 56x12 mm

**RF Receiver Dimensions(H x W x D):**  
76x 42x17 mm

Note: Specifications are typical. Individual units may vary. Specifications are subject to change and improvement without notice.

8.Remote Cradle Mounting Instructions

Aquatic recommends two mounting options:

- 1. If mounting the cradle on a wood surface, two self tapping stainless steel screws are included. Hold the cradle in place and proceed with the self tapping screws.
- 2. If mounting on the surface of a SPA, Boat or other fiberglass surface, we've included an adhesive strip that is resist to most SPA chemicals, saltwater and sunlight. Make sure the mounting surface is clean and dry. Then remove the adhesive proactive tape on both sides of the adhesive strip, and apply the strip to the fiberglass surface. You're now ready to mount the cradle. Simply press firmly for a few seconds and it's done. firmly for a few seconds and it's done.

